



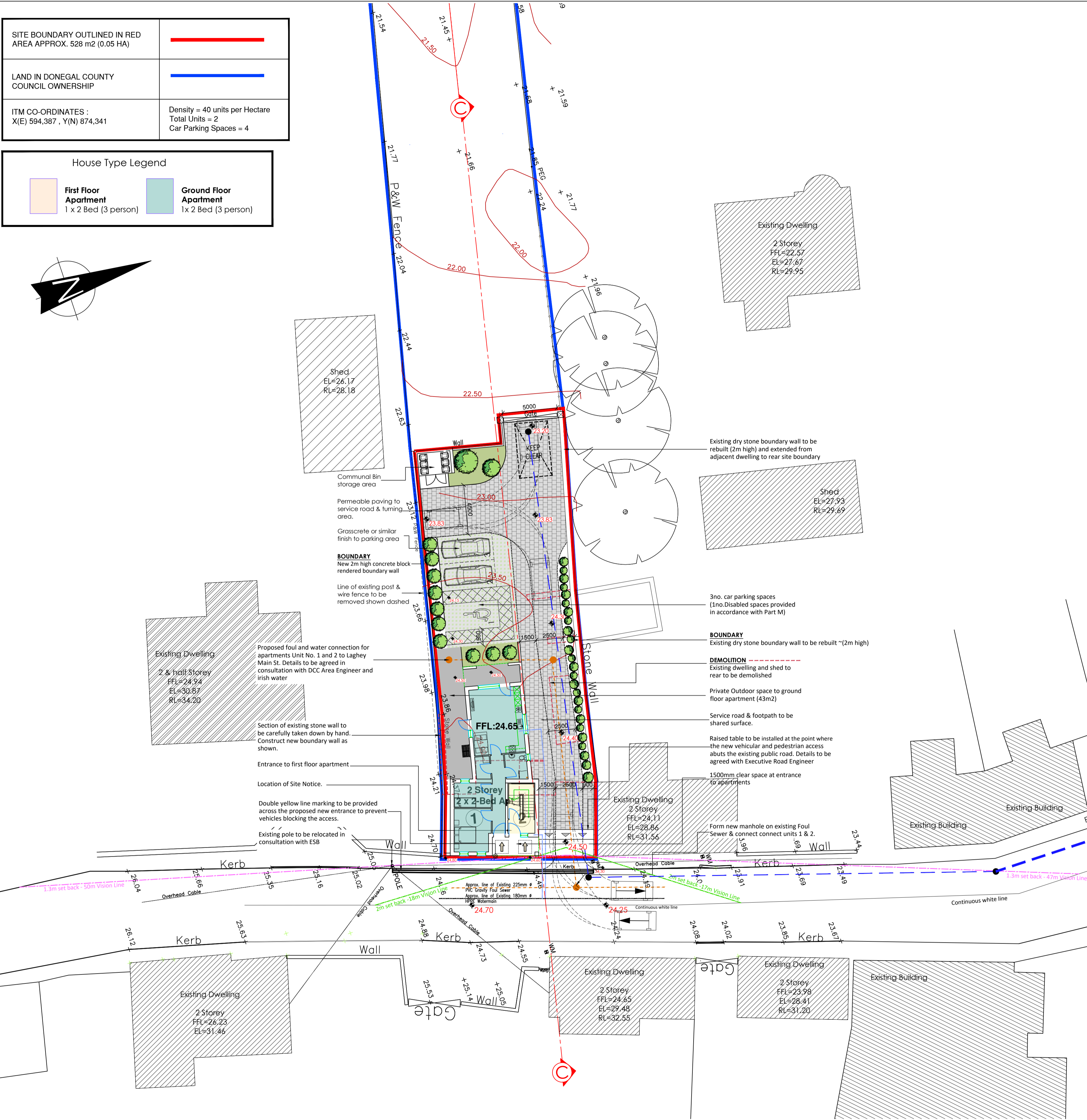
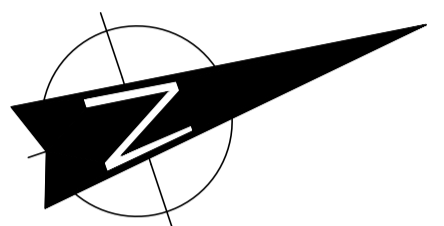
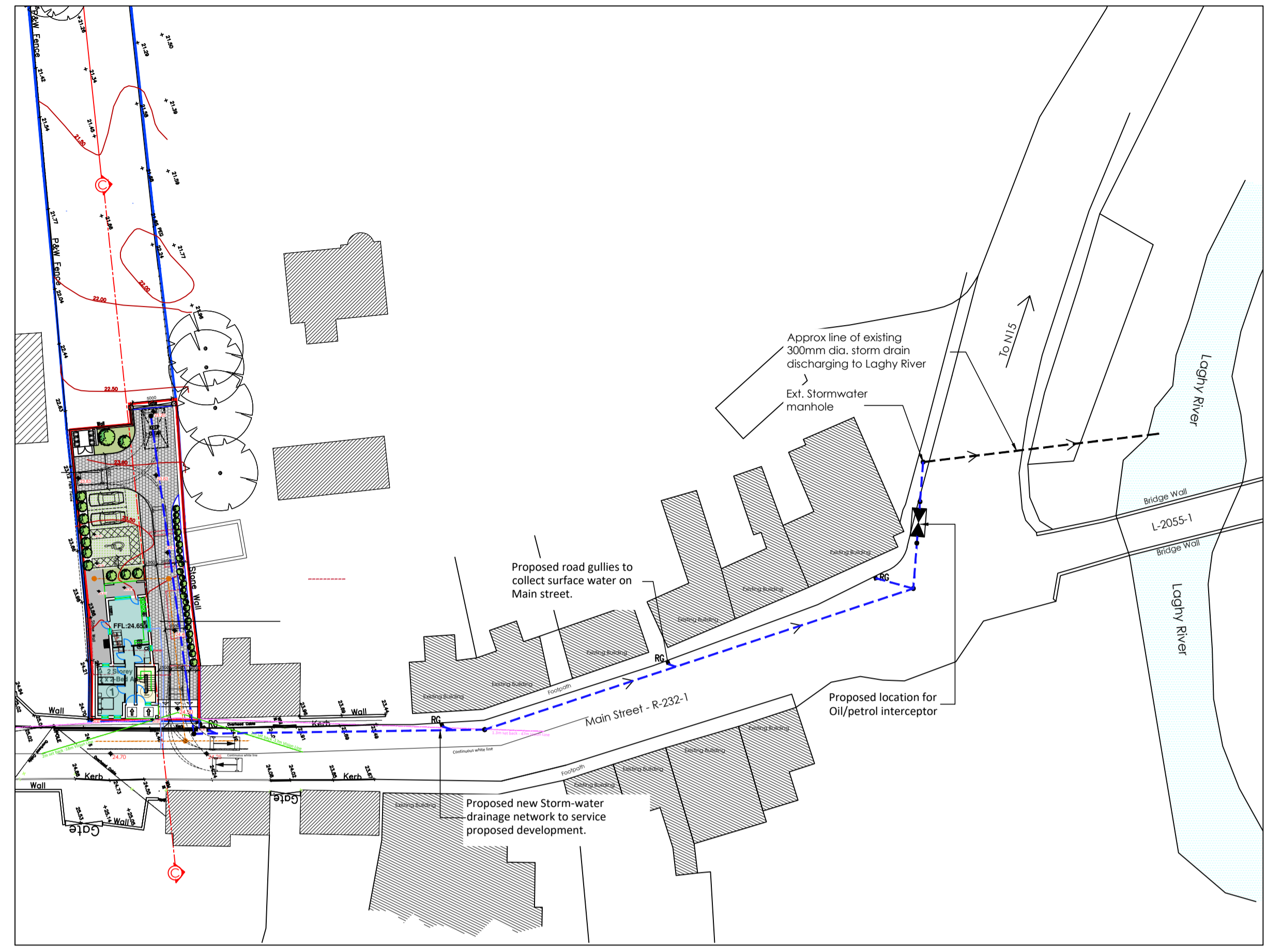


SITE BOUNDARY OUTLINED IN RED AREA APPROX. 528 m2 (0.05 HA)	
LAND IN DONEGAL COUNTY COUNCIL OWNERSHIP	
ITM CO-ORDINATES : X(E) 594,387 , Y(N) 874,341	Density = 40 units per Hectare Total Units = 2 Car Parking Spaces = 4

House Type Legend	
 <b>First Floor Apartment</b> 1 x 2 Bed (3 person)	 <b>Ground Floor Apartment</b> 1x 2 Bed (3 person)



Proposed Site Layout Scale 1:200



Proposed route for up-graded stormwater drainage network. Scale 1:500

NOTES

ARCHITECTS OFFICE  
HOUSING, CORPORATE & CULTURAL SERVICES  
THREE RIVERS CENTRE, LIFFORD, CO. DONEGAL  
TEL: (074)91 53900 - FAX: (074)91 72812  
WEB: www.donegalcoco.ie  
EMAIL: info@donegalcoco.ie

REVISION DATE DESCRIPTION BY

DRAWING  
**Proposed Site Layout Plan.**  
Stormwater up-grade layout.  
SCALE As Shown @A1 DRAWN TQ CHECKED TQ DATE April 24  
PROJECT NO. HCD 0222 DRAWING NO. SS-02 REVISION  
DRAWING STATUS  
Single Stage App.

PROJECT NAME & LOCATION  
Development at Main St,  
Laghy, Co. Donegal.



Do not scale this drawing. All dimensions in millimetres. Written dimensions to be checked on site. Electronic issue to be confirmed by paper copy only.